



# RAIL-TARP / RTW

Tarpaulin measurement form MQ45 rev\_00 of 01/11/2022

**CLEAR** **E-MAIL**

FOR CRAMARO INTERNAL USE	COURIER		JOB ORDER	SHIPMENT DATE
	PRICE			
	PAYMENT			

CUSTOMER DETAILS	COMPANY		VAT No.		TAX CODE	
	ADDRESS		P. CODE	TOWN	PROV.	COUNTRY
	PHONE	E-MAIL				
	REFERENCE					

ORDER TYPE	COMPLETE KIT	TARP SERIAL NO. _____
	REPLACEMENT TARP WITH BOWS, SKATES, HOOKS AND CABLE	TARP SERIAL NO. _____
	REPLACEMENT TARP ONLY	TARP SERIAL NO. _____

ORDER DETAILS	REQUESTED SHIPMENT DATE	SHIPMENT ADDRESS			QUANTITY
	TRANSPORT	ASSEMBLY			
	INCLUDED	EX-WORKS	INCLUDED	EXCLUDED	

Measurements are intended in millimetre. Size A is intended external to the container.  
In order for the tarpaulin system to fit perfectly the vehicle and work correctly, all required measurements must be taken accurately.  
Please send pictures of any relevant details not visible in the drawings below.

**TYPE OF PROTECTION SHIELD**  
Select your type of protection shield and fill in the respective sizes

**PULLEY AND FINAL BOW POSITION**  
Select the desired position for pulley and final bow

BODY CONFIGURATION	BODY BRAND		BODY MODEL		VEHICLE TYPE	
		ALU    STEEL			TRUCK	SEMI-TRAILER
	CHASSIS BRAND		CYLINDER POSITION WITH RESPECT TO FRONT BOARD			
	ALU    STEEL	CYLINDER HIGHER	CYLINDER LOWER	SAME HEIGHT		

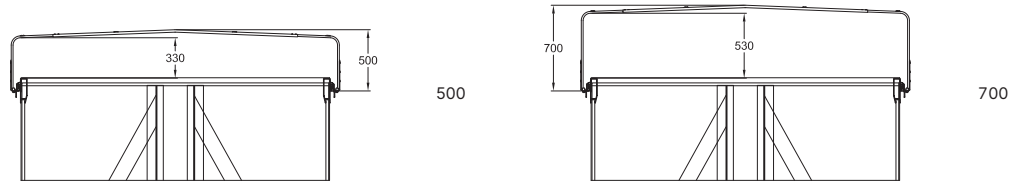
## CRAMARO TARPULIN SYSTEMS S.r.l.

Società con socio unico soggetta alla direzione e al coordinamento di Cramaro Holding S.p.A.

Via Quari Destra 71/G - 37044 Bologna Veneta (VR), Italy - P. IVA IT04079350239 - t. +39 0442 411688 - f. +39 0442 411690  
[info@cramaro.com](mailto:info@cramaro.com) - [www.cramaro.it](http://www.cramaro.it)

FABRIC	COLOUR (RAL) OF PVC TARPULIN		PRE-ASSEMBLY	REAR CLOSURE
PVC	SIGNAL YELLOW 1003"	OPAL GREEN 6026"	YES*	AUTO-BACK*
FIRE RETARDANT PVC*	PURE ORANGE 2004**	AGATE GREY 7038"	NO	STANDARD (MANUAL)
POLYURETHANE (BLACK)*	BRIGHT RED ORANGE 2008	TELEGREY 2 7046		WITH SPRINGS*
	CARMINE RED 3002"	JET BLACK 9005**		NONE
	ULTRAMARINE BLUE 5002"	WHITE ALUMINIUM (SILVER) 9006**		OVERHANGING DOUBLE BOW*
	GENTIAN BLUE 5010	PURE WHITE 9010"		
	SKY BLUE 5015	OTHER*		

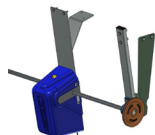
**BOWS (mm)**



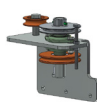
OPERATION	VOLTAGE	SIDE RAILS
MANUAL	12 V	STEEL
ELECTRICAL WITH REMOTE CONTROL*	24 V	ALUMINIUM
ELECTRICAL FULL OPTIONAL*		
HYDRAULIC*		

**MECHANICAL CONFIGURATION**

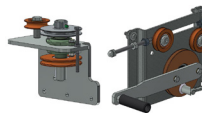
**OPERATING MECHANICS**



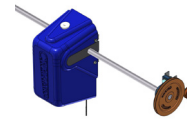
STANDARD



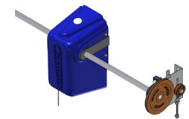
EVO T16;T19



FRONT (T17)  
OR REAR (T18)  
SIDE CRANK



T5;T6



T8;T9

OTHER EXTRAS*	
<p>LONGER ELECTRIC CABLE (NO CONTACTS)</p> <p>ANGLE REDUCTION GEARBOX 1:1</p> <p>CRAMARO FLAT PROTECTION SHIELD</p> <p>CRAMARO NON-FLAT PROTECTION SHIELD</p>	<p>WATERPROOF SEAMS ON POLYURETHAN TARP</p> <p>SPIRAL CABLE SET AND SOCKETS</p> <p>URGENT SHIPPING</p> <p>PACKAGING IN CARTON BOX</p>

NOTES	DATE, STAMP AND SIGNATURE
	<p><b>IMPORTANT:</b> Cramaro Tarpaulin Systems S.r.l. cannot be held liable for any tarpaulin sizing errors due to inaccurate measurements specified in this form.</p> <p>/ /</p>

\* Available with extra price \*\* Also available as fire retardant PVC